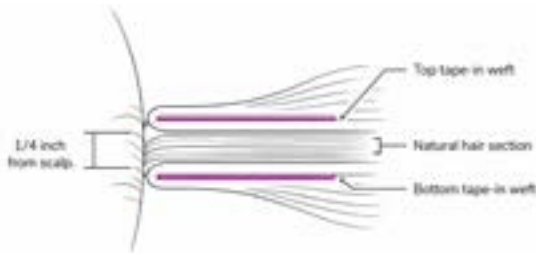


Tape-In Extension Placement Guide

Professional placement for a seamless, long-lasting bond.

- 1 Prep the Hair**
Wash with clarifying shampoo to remove all oils, conditioner, and product buildup. Hair must be completely clean and dry. No leave-in products.
- 2 Section the Hair**
Create a clean horizontal part at the nape, two fingers above the lowest hairline. Section should be thin and even - same width as the tape-in weft.
- 3 Place the Bottom Weft**
Remove adhesive backing. Position underneath the sectioned hair, 1/4 inch from scalp. Press firmly along the entire length.



- 4 Sandwich with Top Weft**
Remove backing from second tape-in. Press directly on top, sandwiching natural hair between both adhesive sides. Seal with flat-jaw pliers or warm flat iron.
- 5 Build the Brick-Layer Pattern**
Release next section (1/2 inch above). Stagger tape-ins so they sit between the ones below - like a brick wall. Creates even weight distribution.



For Textured & Natural Hair (3B-4C)

- Blow out or stretch curly hair before application for strongest bond
- Use slightly wider sections to accommodate thicker hair
- Ensure hair is 100% dry and product-free before taping
- Avoid oil-based products near the tape line after installation

Aftercare, Maintenance & Troubleshooting

Spacing from Hairline



Care & Maintenance

First 48 Hours: Avoid washing, sweating, or getting tape-ins wet. Allows adhesive to fully cure.

Washing: Sulfate-free shampoo. Wash downward - never scrub or bunch at bonds.

Drying: Squeeze water gently. Blow dry on low heat near bonds. Never sleep with wet tape-ins.

Brushing: Loop brush. Hold bonds while brushing. Start from ends.

Reapplication: E very 6-8 weeks. Remove with bond remover, clean wefts, apply new tape, reinstall.

Troubleshooting

Issue	Solution
Tape-in sliding out	Hair not clean enough. Remove, clarify, reapply.
Visible lines	Sections too thick. Re-section thinner and stagger rows.
Pulling or discomfort	Placed too close to scalp. Reposition 1/4 inch away.
Tangling at bonds	Brush more frequently. Lightweight serum above bonds.
Tape residue on removal	Use bond remover. Soak 30 seconds before sliding.