

Halo Extension Sizing Guide

Find your perfect fit in 3 simple steps.

- 1 Measure Your Head Circumference**
 Use a soft measuring tape. Place it around your head at the widest point - across your forehead, above your ears, and around the back. Keep the tape snug but not tight. Write down your measurement in inches.



- 2 Match Your Size**

Size	Wire	Best For
Small	21" - 22" / 14 cm	Petite frames, smaller heads
Medium	22" - 23" / 14 cm	Most common fit
Large	23" - 24" / 16 cm	Larger heads, thicker hair

Between sizes? Go with the larger size for a more comfortable fit.

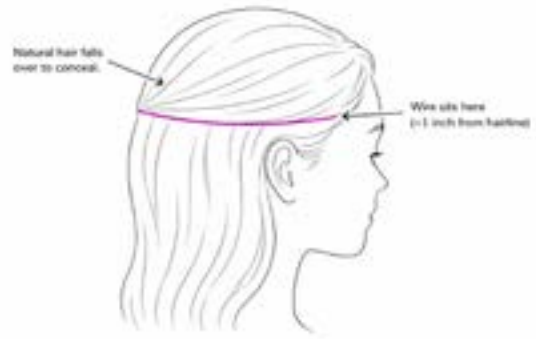
- 3 Adjust the Wire**
 Gently bend the wire to follow the contour of your head. It should sit about 1 inch from your hairline. Use smooth, gradual curves - never sharp bends. If it feels too tight, extend it slightly at the adjustment points. The halo should feel secure but comfortable.

For Textured & Natural Hair (3B-4C)

- Position wire slightly lower on the crown for more coverage
- Use a wide-tooth comb to blend curls over the wire
- Stretch or blow out hair at the crown for a smoother transition
- Apply edge control along the hairline to lay flyaways flat

Placement, Care, & Troubleshooting

Correct Placement



Quick Placement Steps

- 1 Part**
Create a channel ~1 inch from hairline
- 2 Position**
Place halo with wire in the channel
- 3 Release**
Let top hair fall over the wire
- 4 Blend**
Use fingers or wide-tooth comb

Halo Care Tips

- Washing:** Remove halo before washing. Use sulfate-free shampoo. Air dry flat on a towel - never wring.
- Styling:** Use low-to-medium heat settings. Apply heat protectant. Avoid heating the wire area.
- Storage:** Store flat or on a hanger - never fold the wire. Keep in a silk or satin bag.
- Brushing:** Use a loop brush or wide-tooth comb. Start from ends, work up. Never brush from the wire.
- Lifespan:** Lasts 6-12 months with proper care. Limit heat styling to extend lifespan.

Troubleshooting

Issue	Solution
Wire visible at hairline	Lower wire position. Tease hair at
Halo slipping down	Tighten wire. Add bobby pins at temples
Uncomfortable pressure	Extend wire slightly. Smooth out any
Color mismatch at crown	Pull a thin layer of natural hair through
Tangling near wire	Apply lightweight serum. Brush gently