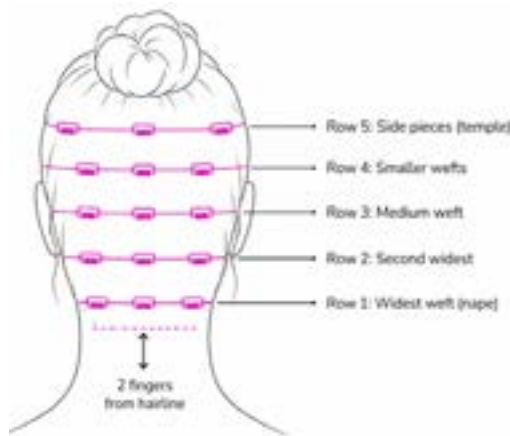


Clip-In Extension Placement Guide

Quick placement for instant length and volume.

- 1 Section at the Nape**
Create a horizontal part 1-2 inches above the nape. Clip rest of hair up. This bottom layer is where your widest weft goes.
- 2 Tease the Roots**
Lightly backcomb roots at the section line. Creates grip for clips. Spray light-hold hairspray at roots.
- 3 Attach the Widest Weft**
Open all clips. Snap center clip onto teased roots first. Secure outer clips working outward from center.
- 4 Layer Upward**
Release next section (1 inch above). Repeat teasing and attach next weft. Use progressively smaller wefts toward temples.
- 5 Blend and Style**
Release next section (1/2 inch above). Stagger tape-ins so they sit between the ones below - like a brick wall. Creates even weight distribution.

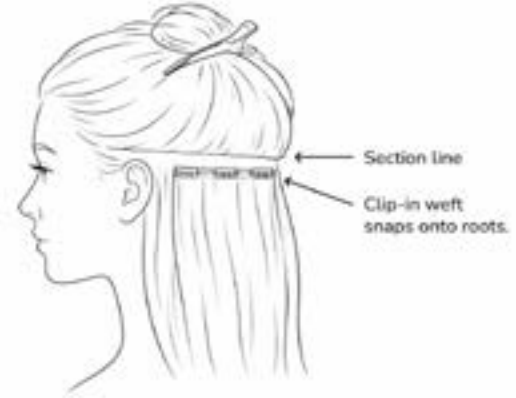


For Textured & Natural Hair (3B-4C)

- Use bobby pins at clip line for extra hold on slippery textures
- Create slightly thicker sections for more natural coverage
- Stretch or blow out kinky/coily hair for best weft concealment
- Remove clip-ins before sleeping to prevent damage

Care, Styling & Troubleshooting

Spacing from Hairline



Care & Styling

Removal: Always remove before sleeping, swimming, or exercise. Open each clip fully before pulling.

Washing: Wash every 15-20 wears. Lay flat in lukewarm water with sulfate-free shampoo. Air dry flat.

Styling: Heat protectant before hot tools. Medium heat only (below 350°F).

Storage: Store flat in a silk-lined box. Never stuff into a drawer.

Lifespan: Quality Remy clip-ins last 6-12 months with proper care.

Troubleshooting

Issue	Solution
Issue	Solution
Wefts slipping out	Tease roots more firmly. Hairspray at roots before clipping.
Visible weft line	Section too low or thin. Take higher, thicker section.
Clips uncomfortable	Check clips fully snapped. Reposition to avoid pressure.
Color mismatch at roots	Pull thin layer of natural hair under bottom weft.